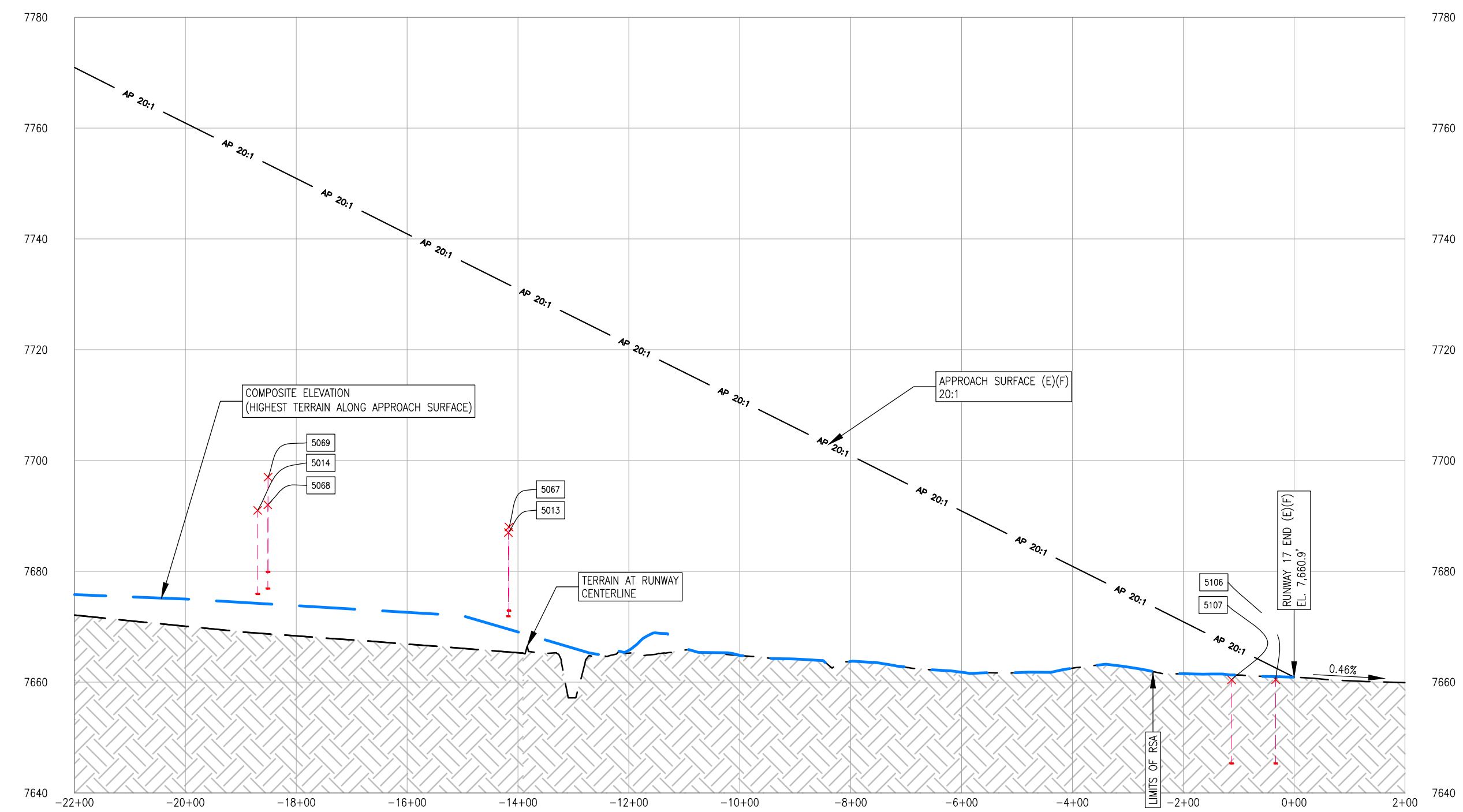
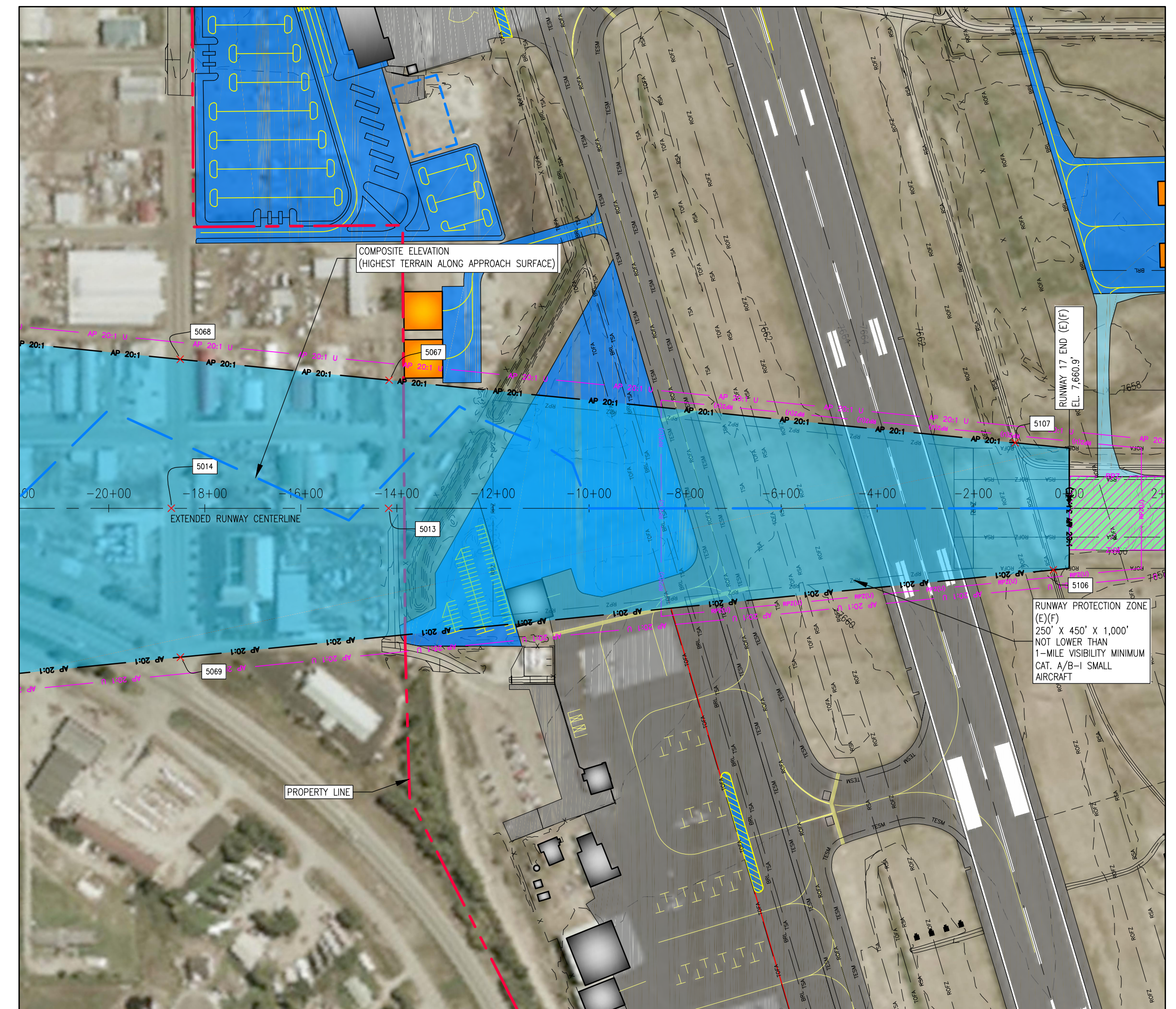
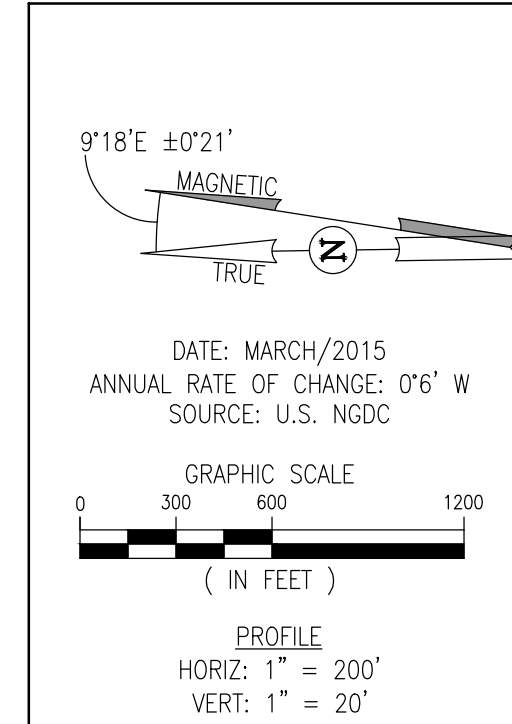


APPROACH ROAD INTERSECTION TABLE							
NO.	OBJECT TYPE	OBJECT HEIGHT	ABOVE GROUND LEVEL (AGL)	EXISTING APPROACH SURFACE ELEVATION	EXISTING APPROACH SURFACE PENETRATION	SURFACE REFERENCE	DISPOSITION
5013	PUBLIC ROAD (+15' ADJUSTMENT ADDED)	15.00'	7887.00'	7731.78'	-44.78'	RUNWAY 17 APPROACH	
5014	PUBLIC ROAD (+15' ADJUSTMENT ADDED)	15.00'	7891.00'	7754.38'	-43.38'	RUNWAY 17 APPROACH	
5067	PUBLIC ROAD (+15' ADJUSTMENT ADDED)	15.00'	7898.00'	7731.72'	-43.72'	RUNWAY 17 APPROACH	
5068	PUBLIC ROAD (+15' ADJUSTMENT ADDED)	15.00'	7892.00'	7753.47'	-45.47'	RUNWAY 17 APPROACH	
5069	PUBLIC ROAD (+15' ADJUSTMENT ADDED)	15.00'	7895.00'	7753.45'	-45.45'	RUNWAY 17 APPROACH	
5106	PUBLIC ROAD (+15' ADJUSTMENT ADDED)	15.00'	7860.46'	7862.58'	-2.12'	RUNWAY 17 APPROACH	
5107	PUBLIC ROAD (+15' ADJUSTMENT ADDED)	15.00'	7866.43'	7866.55'	-0.12'	RUNWAY 17 APPROACH	

- NOTES**
- SERVICE ROADS PROVIDE ACCESS TO THE AIRPORT'S NAVIGATIONAL AIDS. ACCESS TO THESE ROADS IS CONTROLLED.
 - EXISTING AND FUTURE CONDITIONS ARE SHOWN AS (E)(F).
 - ULTIMATE RUNWAY 17 350' SHIFT ONLY REQUIRED FOR FUTURE HANGAR DEVELOPMENT.

- SOURCE**
- THIS SITE PLAN LINE WORK AND AERIAL IMAGE IS BASED ON THE PLANIMETRIC MAPPING & ORTHO-IMAGERY INFORMATION COMPILED BY WOOLPERT, INC. IN 2014.
 - OBSTRUCTION SURVEY DATA WAS COMPILED BY WOOLPERT, INC. IN 2014.
 - ALL HORIZONTAL COORDINATES - NAD83/2011, ALL VERTICAL COORDINATES - NAVD88



I:\Projects\GUC\2015\BANKS\14-15-GUC-AUP-ASD-IMP-17-16.dwg
 Nov 18, 2016 - 9:00am
 Robert Bell

JVIATION



DES: R.L.B.		ISSUE RECORD			
NO.	BY	DATE	DESCRIPTION		
1	S.V.B.	11/17/16	FINAL		
CH: S.V.B.					
APP: S.V.B.					

THE PREPARATION OF THIS DOCUMENT MAY HAVE BEEN SUPPORTED, IN PART, THROUGH THE AIRPORT IMPROVEMENT PROGRAM FINANCIAL ASSISTANCE FROM THE FEDERAL AVIATION ADMINISTRATION AS PROVIDED UNDER TITLE 49 U.S.C. SECTION 47104. THE CONTENTS DO NOT NECESSARILY REFLECT THE OFFICIAL VIEWS OR POLICY OF THE FAA. ACCEPTANCE OF THIS AIRPORT LAYOUT PLAN BY THE FAA DOES NOT IN ANY WAY CONSTITUTE A COMMITMENT ON THE PART OF THE UNITED STATES TO PARTICIPATE IN ANY DEVELOPMENT DEPICTED THEREIN NOR DOES IT INDICATE THAT THE PROPOSED DEVELOPMENT IS ENVIRONMENTALLY ACCEPTABLE OR WOULD HAVE JUSTIFICATION IN ACCORDANCE WITH APPROPRIATE PUBLIC LAWS.

AIRPORT
LAYOUT PLAN

INNER APPROACH SURFACE DRAWING -
RUNWAY 17

AIP PROJ. NO. 3-08-0030-048	JVIATION PROJ. NO. 2014.GUC.03	DATE: NOVEMBER, 2016
--------------------------------	-----------------------------------	-------------------------

SHEET NO.
14 of 19